

FAUNA: Flora & Animals Universal Application

User Manual

Joshua Wilkinson

South East Technological University

Date: 19/04/2024

Student ID: C00262503

Abstract

This is the digital user resources manual for F.A.U.N.A. (Flora & Animal UNiversal Application), and it contains screenshots and instructions on how to use the Android app.

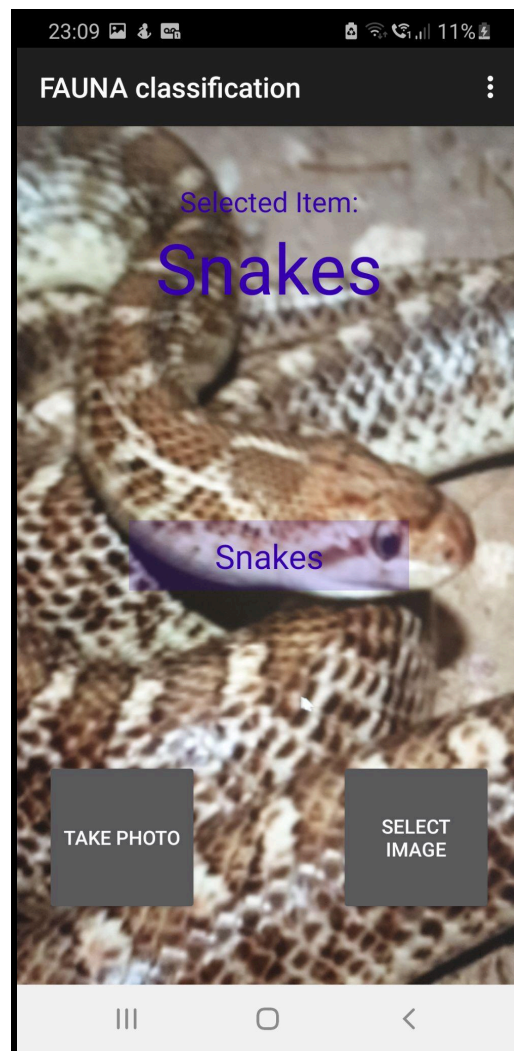
Table of Contents

Abstract	2
Table of Contents	2
How to Use	3
Opening the App	3
Taking a Picture	4
More Info	5
Asking Questions	6
Getting a Reply	7
Other Options	8
Send Feedback	9
Sightings Map	10
Conclusion	11

How to Use

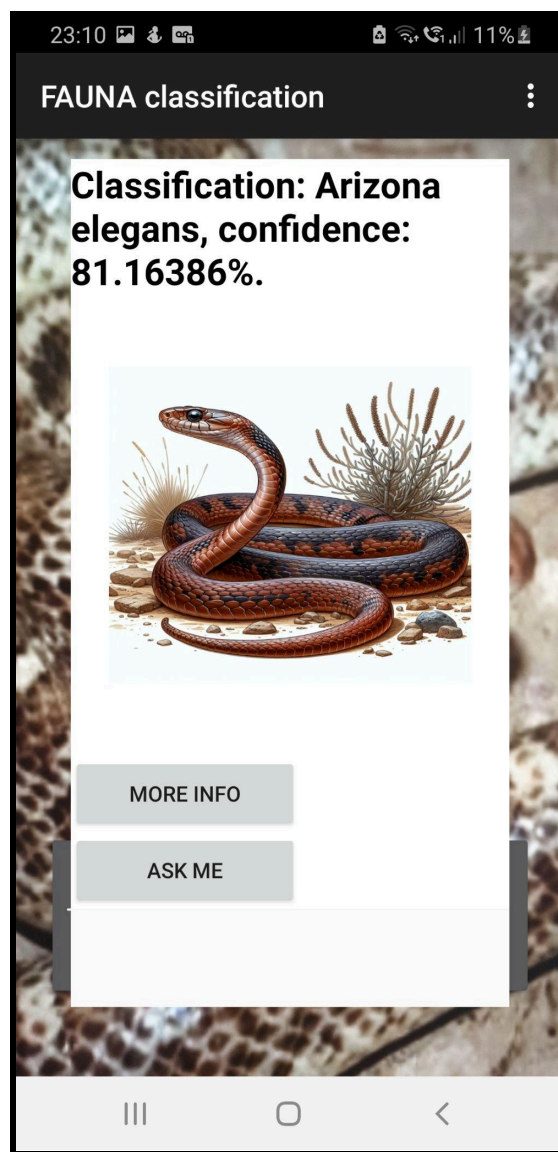
Opening the App

Upon opening the app, you will have a few options. You can take a photo, select an image from your library, or check out the options in the top right for sending feedback, looking at the map of sightings, or asking chatGPT a question. Before taking a picture, make sure you select your category (snakes, spiders, dangerous plants).



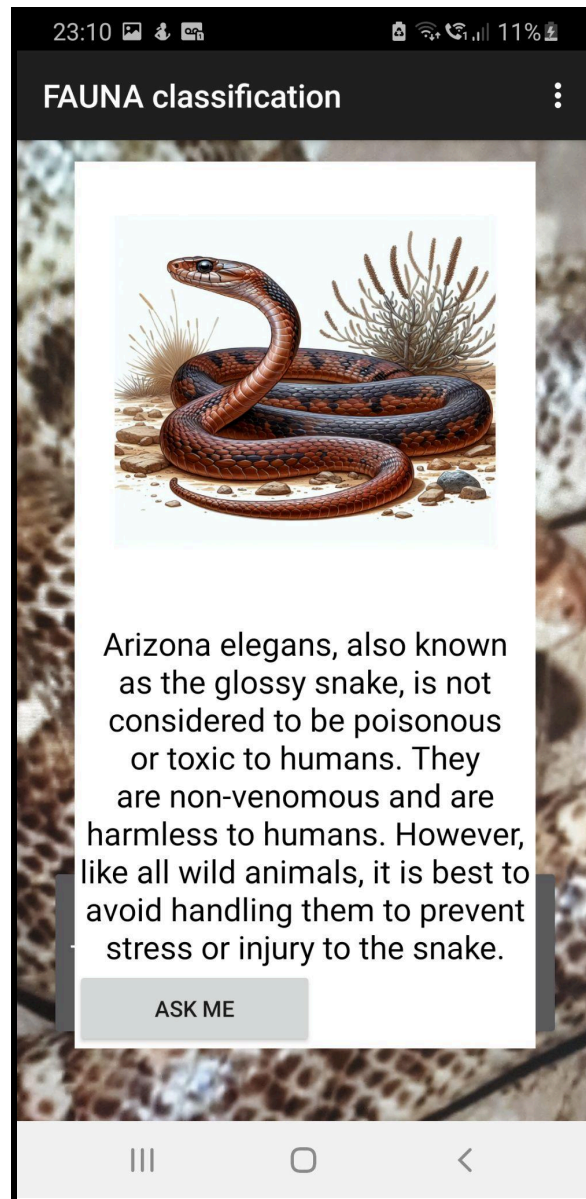
Taking a Picture



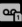
When you take or select a picture, you will get a classification and confidence percentage of the application's best guess. After some time (usually less than 10 seconds with good wifi) you will get an image generated using DALL-E. You are also given 2 buttons: More Info & Ask Me.




More Info

Selecting “More” Info gives you more information on the classification. It will usually tell you if the classification is dangerous, toxic or poisonous.






23:10    11%

FAUNA classification



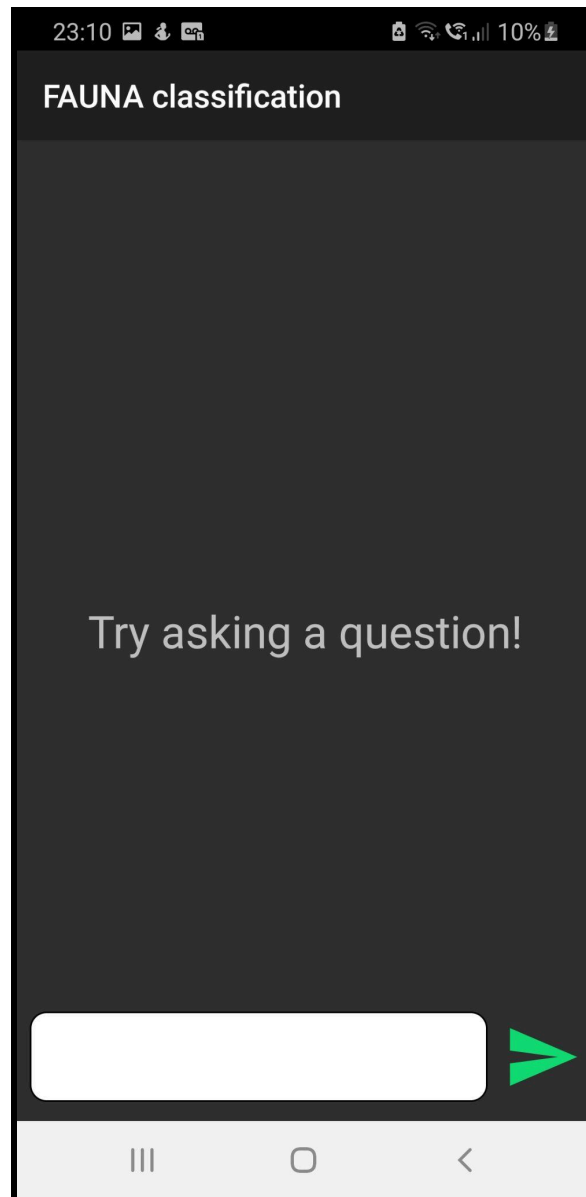
Arizona elegans, also known as the glossy snake, is not considered to be poisonous or toxic to humans. They are non-venomous and are harmless to humans. However, like all wild animals, it is best to avoid handling them to prevent stress or injury to the snake.

ASK ME

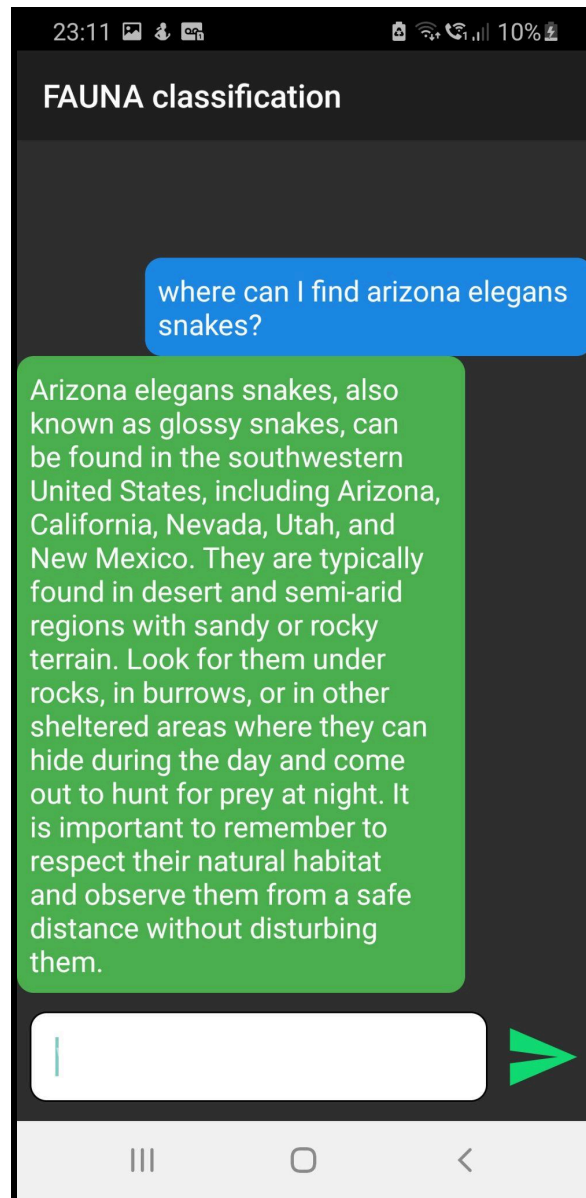
  

Asking Questions

If you have any additional queries, you can ask it here. You can either get to this screen from the start, or from the popup menu after taking/selecting a picture.

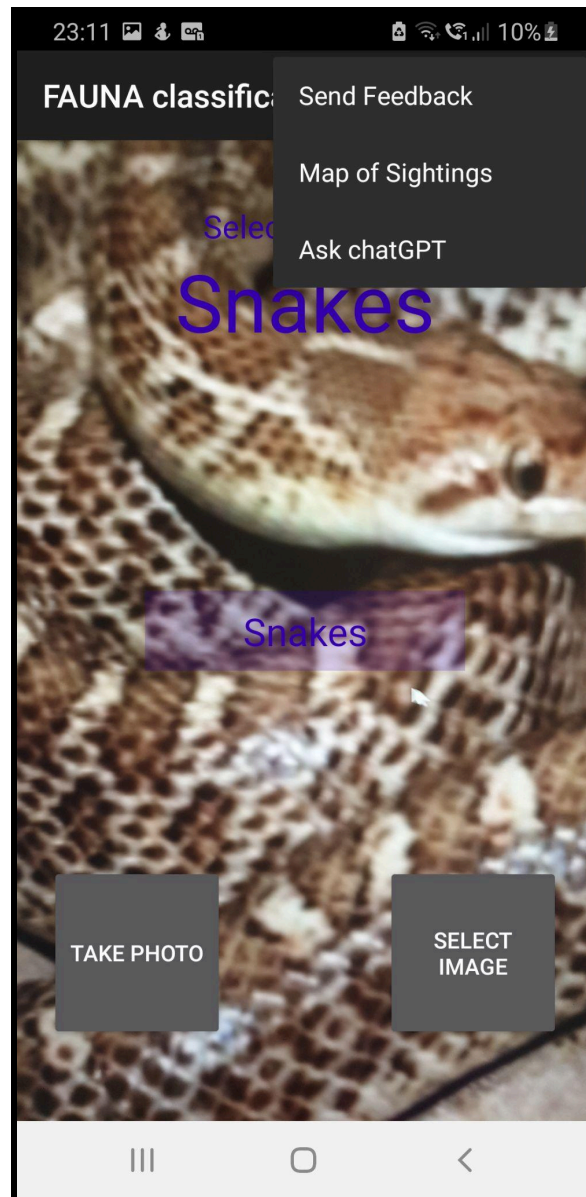


Getting a Reply

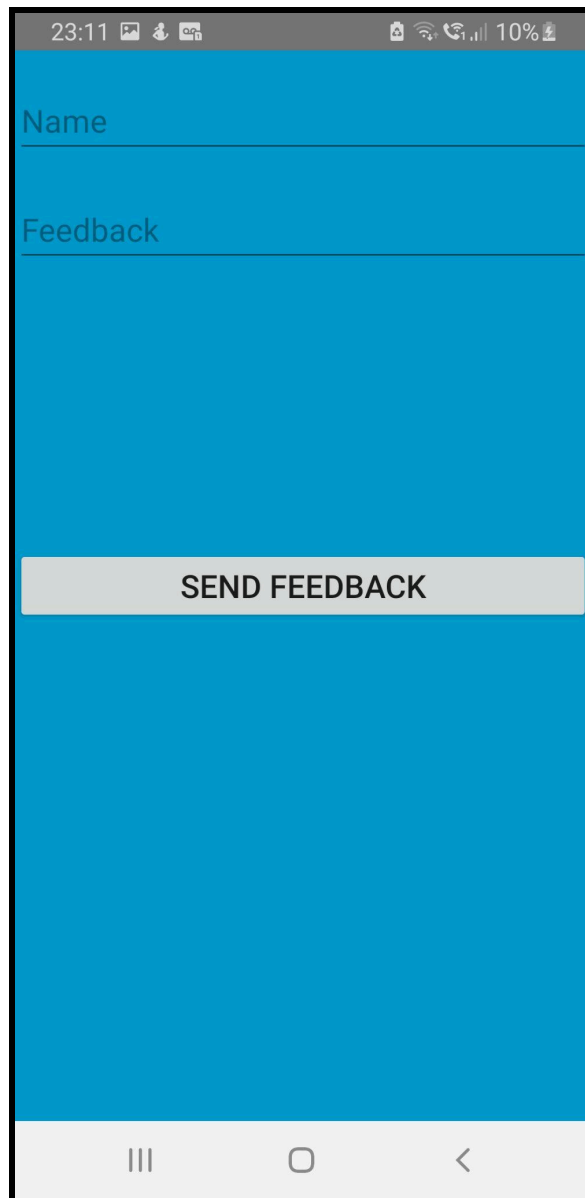


Other Options

If you click on the other options, you will be able to send feedback, view a map of sightings, or ask chatGPT (from a previous screen).



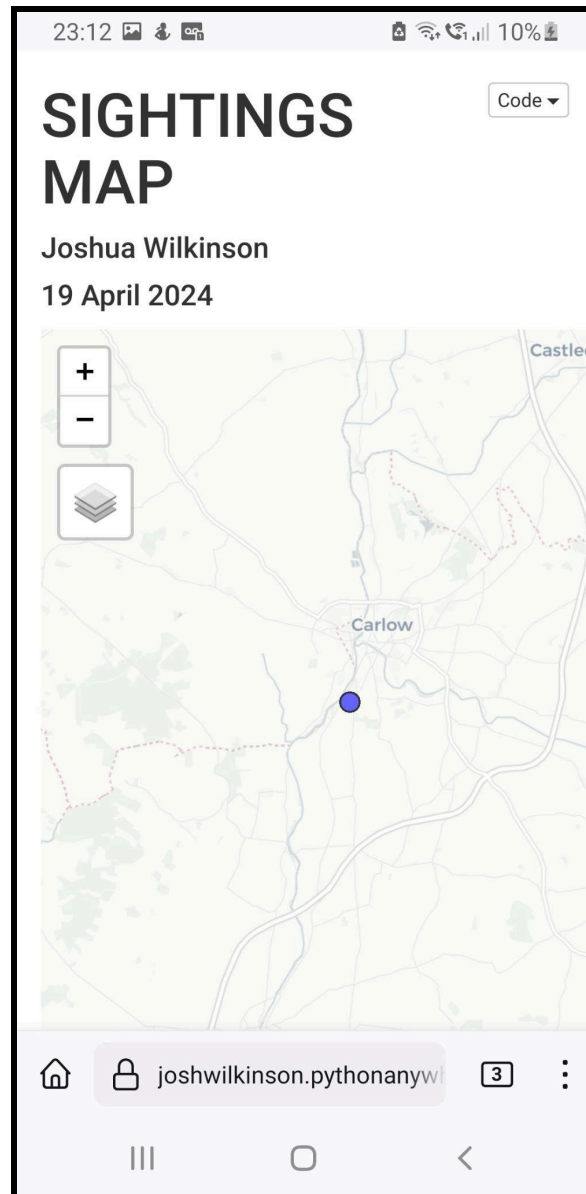
Send Feedback



A mobile application interface for sending feedback. The screen has a blue background. At the top, there is a status bar with the time 23:11, signal strength, Wi-Fi, and 10% battery. Below the status bar, the text "Name" is followed by a horizontal line. Below that, the text "Feedback" is followed by a larger empty text area. At the bottom of the form area, there is a grey button with the text "SEND FEEDBACK". At the very bottom of the screen is an Android navigation bar with three icons: a square, a circle, and a triangle.

Sightings Map

When viewing the map, you can click on the dots to view more information, e.g. a copperhead snake.



Conclusion

Congrats! Now you should be able to use the app! Please keep in mind that the app isn't 100% accurate, but I aim to keep improving the machine learning part over time.